

LOFT M217

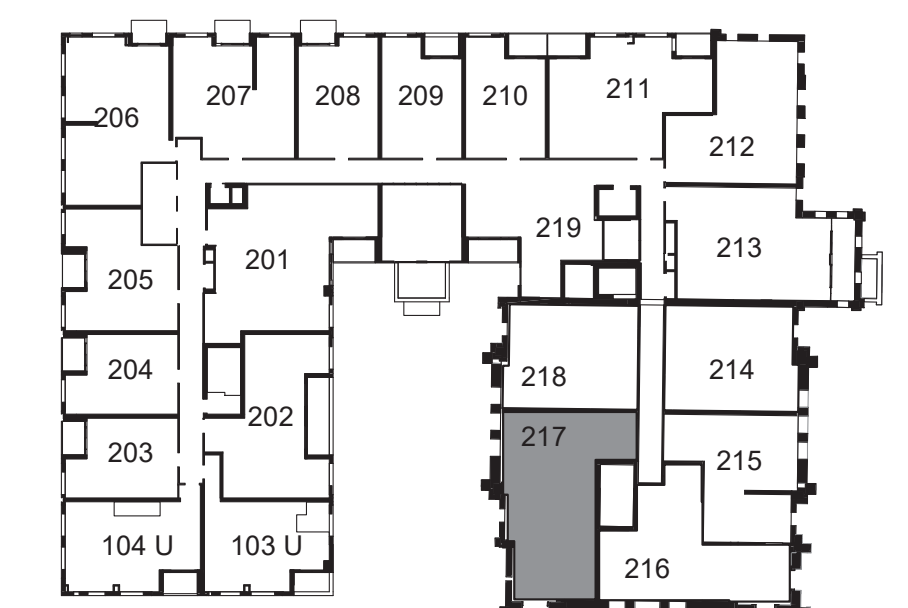
2 BEDROOM & 2.5 BATHS
1,465 SQ.FT.

GOURMET CHEF KITCHEN

1. Quartz Slab waterfall island and countertop with double basin under mount stainless steel sink
2. Quartz Backsplash
3. Matte black single lever deck mounted faucet
4. Miele appliances
5. Miele range hood and exhaust
6. Built-in Pantry

LUXURIOUS DESIGNER BATHS

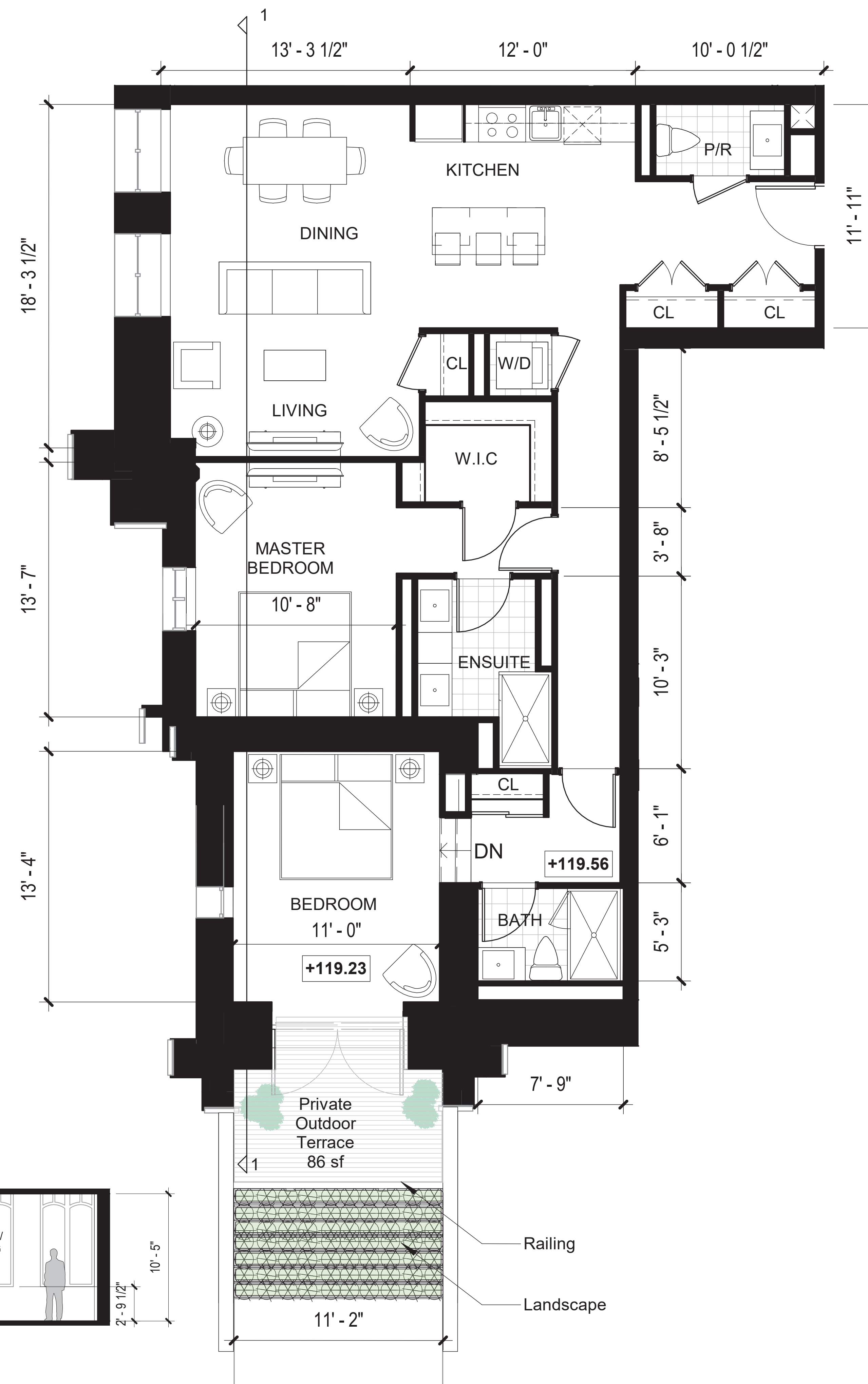
1. Integrated under mount vanity sink and counter with wall-mounted single lever faucet
2. Custom designed European inspired cabinetry (Irpina or equivalent)
3. Full vanity width black framed mirror
4. Master Ensuite features double sinks, linen closet, large walk-in shower



FLOOR 2

*Note: Interior layout shown is subject to change pending further review and coordination. Ceiling heights show underside of the slab. Drop ceiling levels are to be coordinated with mechanical engineers.

Sizes and specifications are subject to change without notice. E. & O. E. March 2019



SECTION 1